

DATA SHEET

PRESSURE-COMPENSATING SHUT-OFF GUN



Brass Gun Model: **39410**

**Brass Gun/Lance
Assembly Models*:** **39411, 39412, 39422**



Model 39411

COMMON SPECIFICATIONS		U.S.	Metric
Maximum Flow		21 gpm	79 lpm
Maximum Pressure		7250 psi	500 bar
Maximum Temperature		212° F	100° C
Inlet Port		½" BSP(F)	½" BSP(F)
Discharge Port (Gun)		½" BSP(F)	½" BSP(F)
Discharge Port (Lance)		¼" NPT(F)	¼" NPT(F)
Weight (Gun Only)		3.2 lbs	1.45 kg
Weight (Gun and Lance)	39411	5.9 lbs	2.68 kg
	39412	7.6 lbs	3.45 kg
	39422	9.2 lbs	4.17 kg
Dimensions (Gun Only)		8.62 x 8.50 x 1.50"	219 x 216 x 38 mm
Dimensions (Gun and Lance)	39411	8.5 x 24.0"	216 x 610 mm
	39412	8.5 x 40.0"	216 x 1010 mm
	39422	8.5 x 58.0"	216 x 1470 mm

Use only at above specifications to ensure proper gun life and performance.

FEATURES

- Pressure-compensating valve design permits a gradual pull on the trigger for gradual build-up of pressure.
- Durable nylon blended body and trigger provide longer life and superior strength.
- Quality construction, combined with stainless steel valve and seat, ensures thousands of continuous cycles.
- Special safety latch prevents unintentional operation.

*NOTE: Lances are 304 Stainless Steel

SELECTION

Select a gun to match system flow, pressure requirements, temperature and function being performed.

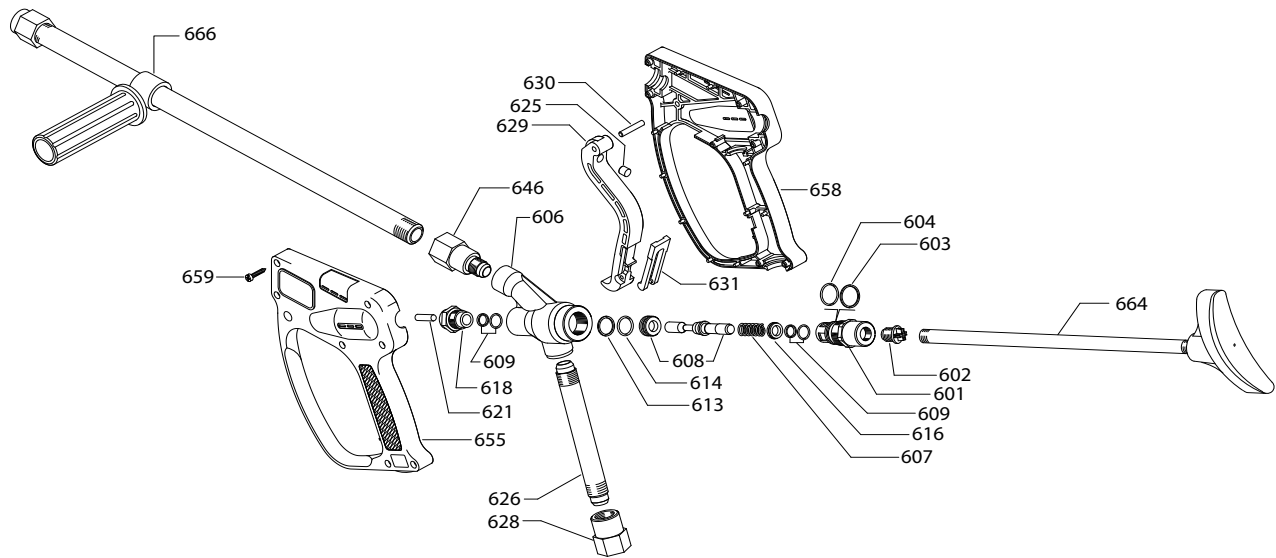
INSTALLATION

Install the appropriate regulator or unloader when using a shut-off gun to avoid pressure spikes when the gun is shut off. Severe damage can occur to high-pressure systems without this safety device.

OPERATION

Flow through the gun occurs by squeezing the trigger. Because of the unique valve design, a gradual pull on the trigger will permit a gradual build-up of pressure up to 7250 psi. Squeezing the trigger lifts the piston off the seat and allows flow through the flow ports and around the perimeter of the seat. A special safety latch locks the gun closed to prevent unintentional operation.

EXPLODED VIEW



PARTS LIST

ITEM	PN	MATL	DESCRIPTION	QTY
601	39405	BB	Plug, Spring	1
602	—	NY	Plug, Rear	1
603	—	PTFE	Backup Ring, Plug	1
604	—	NBR	O-Ring, Plug-85D	1
606	—	BB	Body	1
607	—	S	Spring, Piston	1
608	—	S	Seat, Piston 2-Piece Set	1
609	—	NBR	Seal, Piston with O-Ring	2
613	—	PTFE	Backup Ring, Seat	1
614	—	FPM	O-Ring, Seat	1
616	—	BB	Washer	1
618	39408	BB	Retainer, Piston	1
621	—	BB	Rod, Actuator	1
625	—	S	Striker	1
626	39407	S	Pipe, Inlet	1
628	39419	S	Fitting, Inlet [1/2" BSP(F)]	1
629	—	NY	Trigger (Black)	1
630	—	BB	Pin, Trigger	1
631	—	NY	Latch, Safety (Red)	1

ITEM	PN	MATL	DESCRIPTION	QTY
646	39423	S	Fitting, Discharge [1/2" BSP(F)]	1
655	—	NY	Handle, Left Half	1
658	—	NY	Handle, Right Half	1
659	—	S	Screw, (M3.5 x 18)	7
663	31069	—	Assembly, Grip	1
664	39414	—	Shoulder Support	1
665	39418	NY	Assembly, Handle (Includes: 655, 658, 659)	1
666	32437	S	Assembly, Lance/Grip 16" (400 mm)	1
	32438	S	Assembly, Lance/Grip 32" (800 mm)	1
	39194	S	Assembly, Lance/Grip 50" (1200 mm)	1
667	31839	—	Assembly, Trigger (Includes: 625, 629, 630, 631)	1
668	31837	NBR*	Kit, Gun Repair (Includes: 603, 604, 607, 608, 609, 613, 614, 616, 621)	1
669	31836	NBR*	Kit, O-Ring (Includes: 603, 604, 609, 613, 614)	1

Italics are optional items.

*Review material codes for individual parts (FPM O-Ring is used)

MATERIAL CODES: (Not Part of Part Number): BB=Brass FPM=Fluorocarbon
NBR=Medium Nitrile (Buna-N) NY=Nylon PTFE=Pure Polytetrafluoroethylene S=304SS

TROUBLESHOOTING

Water leaking out the discharge of the gun

- Object lodged between the seat and ball
- Seat worn
- O-ring under seat worn

Water leaking out the lever area

- O-ring around actuator rod worn

SKIN PUNCTURE HAZARD

Do not allow spray to contact any part of the body or animals. Pumped liquids under high pressure can pierce skin and underlying tissue or can deflect debris leading to serious personal injury or death.

1. Relieve all line pressure in the inlet line to the pump and discharge line from the pump before performing any maintenance on the gun.
2. When high-pressure gun is not in use, set safety trigger lock (safety latch) to avoid accidental high-pressure operation and personal injury or property damage.

CAUTIONS AND WARNINGS

All high-pressure systems require a primary pressure regulating device (i.e. regulator, unloader) and a secondary pressure relief device (i.e. pop-off valve, relief valve). Failure to install such relief devices could result in personal injury or damage to pump or property. Cat Pumps does not assume any liability or responsibility for the operation of a customer's high-pressure system.

Read all CAUTIONS and WARNINGS before commencing service or operation of any high-pressure system. The CAUTIONS and WARNINGS are included in each Service Manual and with each Accessory Data sheet. CAUTIONS and WARNINGS can also be viewed online at www.catpumps.com/dynamic-literature/cautions-and-warnings or can be requested directly from Cat Pumps.

WARRANTY

View the Limited Warranty on-line at www.catpumps.com/literature/cat-pumps-limited-warranty