

MODEL 6835 PLUNGER PUMP



40 GPM – 3,000 PSI

Engineered for Demanding Application Requirements

The Cat Pumps model 6835 expands the 68-frame block-style plunger pump to new heights with a flow rate of 40 gpm/151 lpm and pressure rating to 3,000 psi/207 bar. Based on the field-proven 6831 design, the 6835 is everything you expect from Cat Pumps: engineered to the last detail to provide exceptional life in the most demanding applications.

Primarily designed for Blowout Preventer (BOP) Charging applications, the 6835 pump features a high-strength 6-piece packing assembly with bronze adapters, PPS spacers, and SFTK V-packings to accommodate the rigorous performance rating—and does not require packing adjustment.

Special high-density, polished concentric ceramic plungers provide a true wear surface, resulting in extended seal life and hours of trouble-free operation. The 6835 joins a long list of Cat Pumps products recognized for durability, reliability and dependable performance.

Features:

- Special SFTK V-packings with bronze adapters and PPS spacers provide extra stability at high pressure and extend seal life.
- Rugged drive-end and block-style manifold are designed for continuous duty and high-performance application requirements.
- Pump “wet-end” is easily serviced without entering the crankcase, reducing field service time and effort.

Typical Applications:

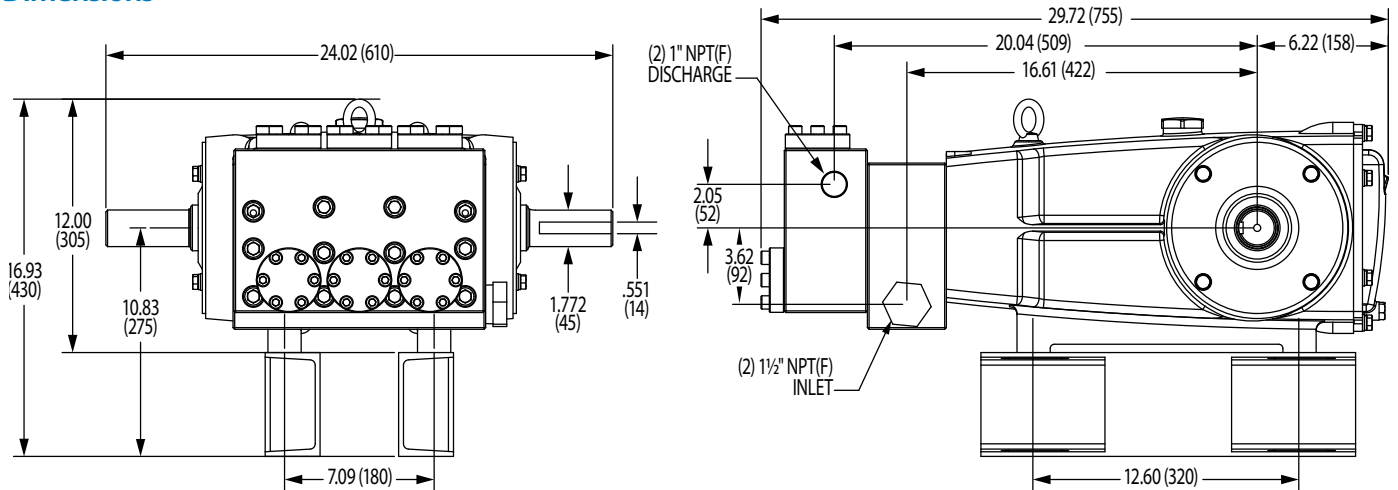
- Blowout Preventer (BOP) Charging
- High-Pressure Washdown
- High-Pressure Injection
- High-Flow/Pressure Flushing
- Water Jetting

Specifications

	US MEASURE	METRIC MEASURE
Flow	40 gpm	151 lpm
Pressure Range	100 – 3000 psi	6.9 – 207 bar
Pump RPM*	625 rpm	625 rpm
Inlet Pressure Range	Flooded to 50 psi	Flooded to 3.5 bar
Max Liquid Temperature	140° F	60° C
Inlet Ports (2)	1 ½" NPT(F)	1 ½" NPT(F)
Discharge Ports (2)	1" NPT(F)	1" NPT(F)
Shaft Diameter	1.772"	45 mm
Weight	355 lbs	161 kg
Dimensions	29.72 x 24.02 x 12.00"	755 x 610 x 305 mm

*Pump minimum is 100 RPM

Dimensions



Popular Accessories



Relief Valve
PN 890709
20–60 gpm
1500–4000 psi



Pop-Off Valve
PN 890711
0–50 gpm
1000–6000 psi



Pressure Gauge
PN 6089
0–6000 psi



Pulsation Dampener
PN 6018
40 gpm
3000 psi



Oil
PN 6102
2.5 Gallon Jug
Specially-Formulated
for Extended Protection

Contact Cat Pumps for more information at info@catpumps.com or (763) 780-5440



CAT PUMPS
1681 – 94TH LANE N.E. MINNEAPOLIS, MN 55449-4324
PHONE (763) 780-5440 — FAX (763) 780-2958
info@catpumps.com | www.catpumps.com